

Project Name:	Fixture Type:
Complete Catalog #:	Date:
Comments:	

PROTON STAR LED STREET LIGHT



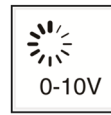
The **Proton Star LED Street Light** delivers the best LED street light performance, with up to 170 lpW, IP65 rating, and IK09 impact rating. The die-cast aluminum housing and PC lens ensure both durability and excellent thermal management. cULus and DLC listing ensure safety, quality, and efficiency. These luminaires also boast a wide operating temperature range from -40°F to 122°F, a photocontrol option, and 0-10V and 1-10V dimming.

FEATURES

- cULus, DLC, FCC
- IP65 rated
- IK09 impact rated
- Die-cast aluminum housing with PC lens
- 150 or 170 lpW
- 3000K, 4000K, 5000K, or 6000K CCTs
- 0-10V & 1-10V dimming
- >80 CRI
- Photocontrol option
- Up to 220W and 33,000 lumens per ANSI/IES LM79-19

APPLICATIONS

- Street light
- Parking lots
- Commercial area light



PERFORMANCE INFORMATION

WATTAGE	LUMENS	CCT	INPUT VOLTAGE	MINIMUM ORDER QTY	US STOCK
20-60W	3,000-9,000; 3,400-10,200	3000K/4000K/5000K/6000K	120-277VAC or 277-480VAC	2	Yes
80/100/120/150W	12,000/14,000/18,000/22,500; 13,600/17,000/20,400/25,500	3000K/4000K/5000K/6000K	120-277VAC or 277-480VAC	2	Yes
180/200/220W	27,000/30,000/33,000	3000K/4000K/5000K/6000K	120-277VAC or 277-480VAC	2	Yes

PART NUMBER BUILDER

MFR	PRODUCT	WATTAGE	INPUT VOLTAGE
ECO	ZY-ST	H1-20-60W = 20-60W	277V = 120-277VAC
		H2-80/100/120/150W = 80/100/120/150W	480V = 277-480VAC
		H3-180/200/220W = 180/200/220W	
Example Part Number			
ECO-ZY-ST-H3-180/200/220W-277V			

TECHNICAL SPECIFICATIONS

Input Voltage	120-277VAC or 277-480VAC
Wattage	Up to 220W
Power Frequency	50-60Hz
Lumens	Up to 33,000
Light Distribution	T3-M
CRI	80+
CCT Options	3000K/4000K/5000K/6000K
Efficacy Options	150 lm/W or 170 lm/W
IP Rating	IP65
Impact Rating	IK09
Lumen Maintenance (L70)	50,000 hours per ANSI/IES TM-21-11 at 25° C
Control Options	JL-200X photocontrol base, JL-205 series photocontrol sensor 0-10V and 1-10V dimming
Operating Temperature	-40° to 122° F
Housing Material	Die-cast aluminum and PC lens
Housing Color	Grey or White
Surge Protection	Line-Line 10kV, Line-FG 10kV per EN61643-11:2012+All
Net Weight	H1: 7.7 lbs; H2: 10.4 lbs; H3: 15.4 lbs
Certifications	cULus, DLC, FCC
Warranty	10 years or 50,000 hour non-prorated

*Data is based upon tests performed in a controlled environment and representative performance. Actual performance can vary depending on operating conditions. Specifications are subject to change without notice. All specifications are nominal unless otherwise noted.

*IES files provided on request.

*Electrical and photometric measurements performed according to ANSI/IES LM-79-19.

PROTON STAR LED STREET LIGHT

OUTPUT CURRENT

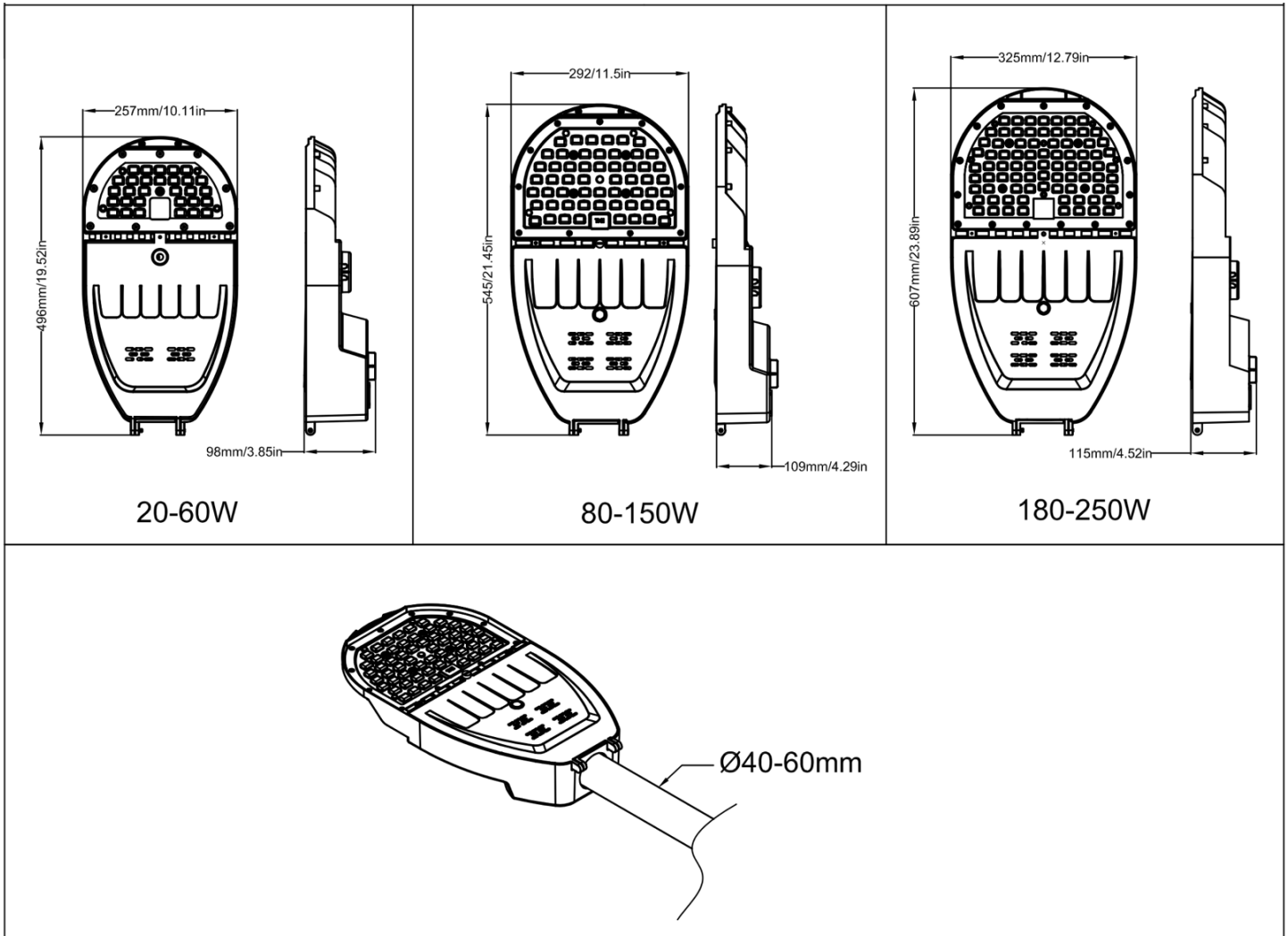
Dimension Unit: mm/inch	Rated Wattage	Voltage	Amperages
	20W	120V	0.17A
		277V	0.07A
		480V	0.04A
	60W	120V	0.5A
		277V	0.22A
		480V	1.125A
	80W	120V	0.67A
		277V	0.29A
		480V	0.17A
	100W	120V	0.83A
		277V	0.36A
		480V	0.21A
	120W	120V	1A
		277V	0.43A
		480V	0.25A
	150W	120V	1.25A
		277V	0.54A
		480V	0.31A
	180W	120V	1.5A
		277V	0.65A
		480V	0.375A
	200W	120V	1.67A
		277V	0.72A
		480V	0.42A
	220W	120V	1.83A
		277V	0.79A
		480V	0.46A

PROTON STAR LED STREET LIGHT

CONTROLS

Control Options: JL-200X photocontrol base, JL-205 series photocontrol sensor, 0-10V and 1-10V dimming. 7-pin shorting cap available.

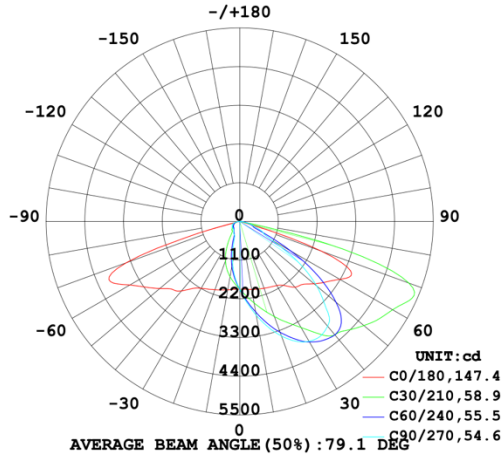
DIMENSIONS



PHOTOMETRICS

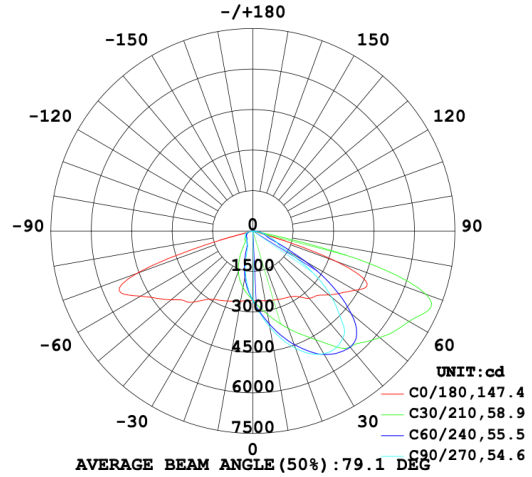
60W, 120-277VAC:

LUMINOUS INTENSITY DISTRIBUTION DIAGRAM



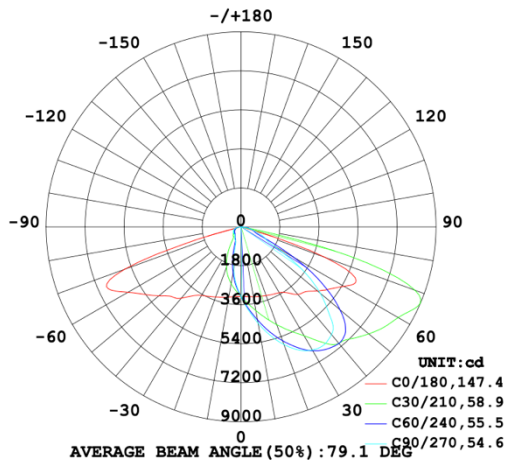
80W, 120-277VAC:

LUMINOUS INTENSITY DISTRIBUTION DIAGRAM



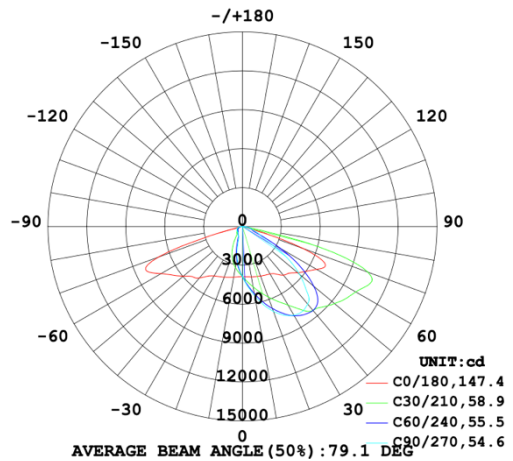
100W, 120-277VAC:

LUMINOUS INTENSITY DISTRIBUTION DIAGRAM



120W, 120-277VAC:

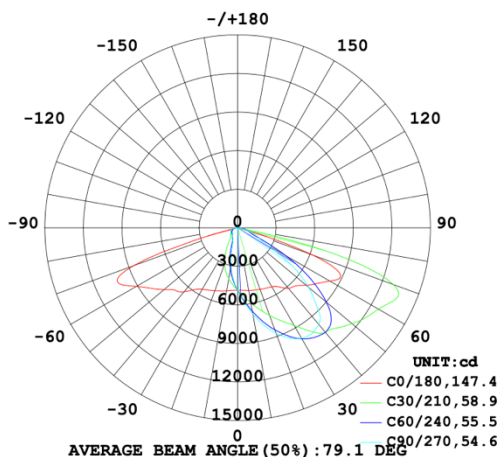
LUMINOUS INTENSITY DISTRIBUTION DIAGRAM



PHOTOMETRICS, CONTINUED

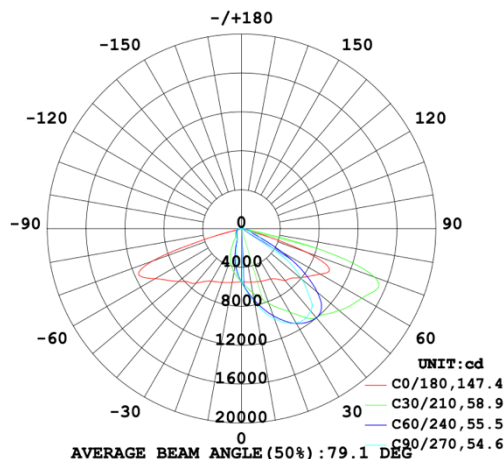
150W, 120-277VAC:

LUMINOUS INTENSITY DISTRIBUTION DIAGRAM



180W, 120-277VAC:

LUMINOUS INTENSITY DISTRIBUTION DIAGRAM



CAUTIONS

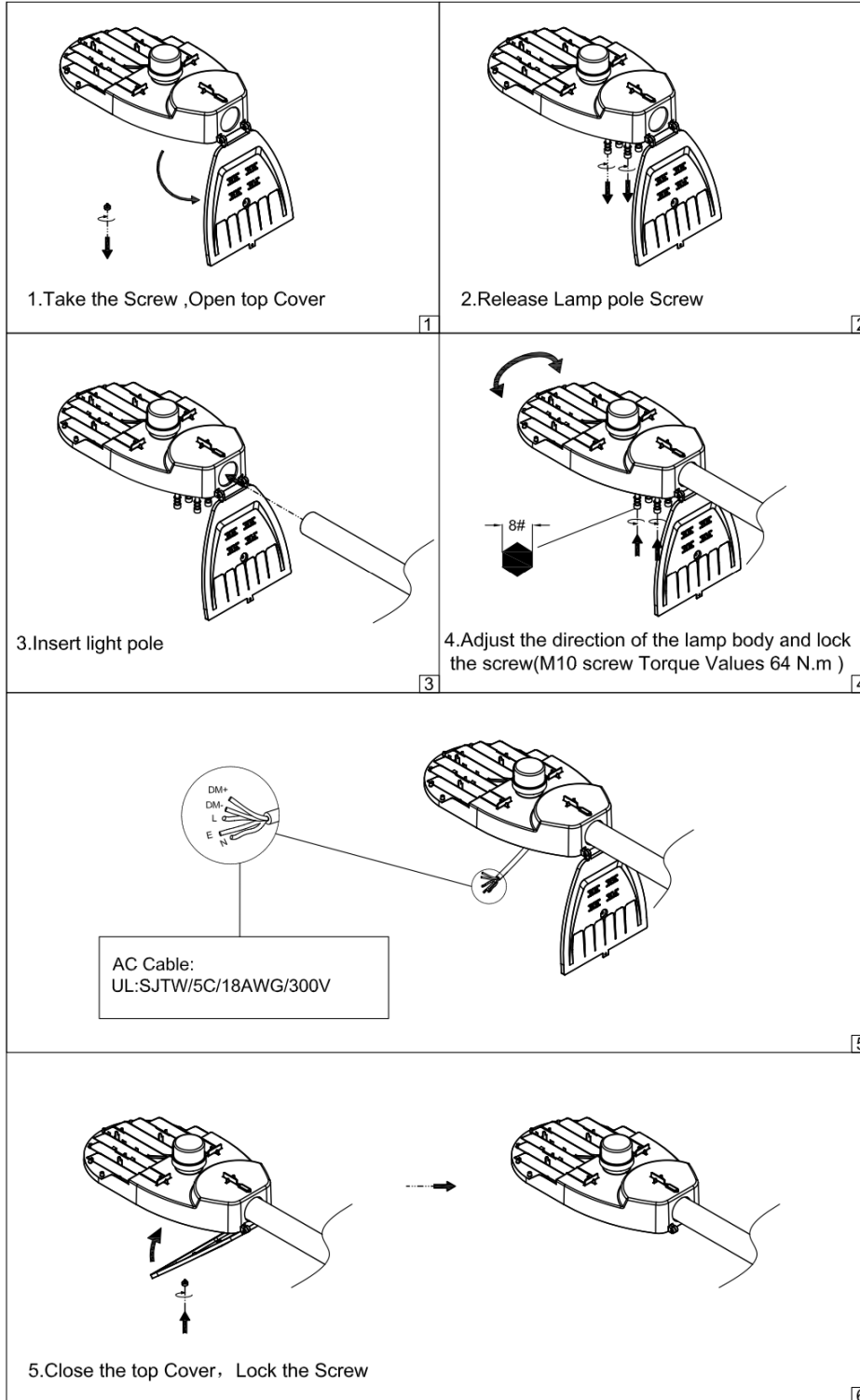
PLEASE READ ALL INSTRUCTIONS BEFORE ATTEMPTING INSTALLATION

- To prevent personal injury or product damage only licensed electricians should install.
- To avoid electric shock or component damage disconnect power before attempting installation or servicing.
- This product must be installed in accordance with the national electric code (NEC) and all applicable federal, state and local electric codes and safety standards.
- Disconnect product and allow cooling prior to servicing.
- Any alteration or modification of this product is expressly forbidden as it may cause serious personal injury, death, property damage and/or product malfunction.
- To prevent product malfunction and/or electrical shock this product must be properly grounded.
- This luminaire is designed to operate in ambient temperatures ranging from -40°C to 50°C and to be horizontally mounted with the LEDs facing down.
- This product must be installed in accordance with the applicable installation code by a Person familiar with the construction and operation of the product and the hazards involved.
- MIN 90°C SUPPLY CONDUCTORS.
- CONSULT A QUALIFIED ELECTRICIAN TO ENSURE CORRECT BRANCH CIRCUIT CONDUCTOR.
- CAUTION - RISK OF FIRE.
- This product is not available for several special environments, such as places with corrosive gas liquids or high pressure water vapor.

1. All electrical work must conform to the National Electric Code (NEC) and all applicable local codes and ordinances.
2. Sportsbeams lighting should only be installed by qualified personnel. Please ensure that you have verified the safety of any existing power distribution systems before beginning installation. Failure to follow Operating Instructions may lead to death, Severe Injury, or Property Damage.

- Turn off power before performing any electrical or control work. **FAILURE TO FOLLOW THIS WARNING MAY LEAD TO DEATH, SEVERE INJURY, OR PROPERTY DAMAGE.**
- DO NOT make or alter any open holes in the luminaire. Do not modify the luminaire.
- Follow all applicable safety procedures and use Personal Protective Equipment such as hardhats, safety glasses, reflective vests, electrical safety gloves, fall protection equipment and safety toe boots during the installation, operation, and maintenance of the luminaire. **FAILURE TO FOLLOW THIS WARNING MAY LEAD TO DEATH, SEVERE INJURY, OR PROPERTY DAMAGE.**
- NEVER Risk eye injury! Eye protection is required at all times during the installation, operation, and maintenance of the luminaire. The high intensity light produced by the luminaire can cause severe damage to the eye if viewed directly at close range. Avoid being in front of a luminaire that is on or wear suitable light blocking protective eye-wear such as welding goggles. Store luminaires in a clean, dry place, protected from dirt, water, and sunlight.

INSTALLATION INSTRUCTION



1. Drill appropriate knockout according to the size of the mounting bracket.
2. Once fixture is positioned, secure the fixture with screws tightly.
3. Make all necessary wiring connections, observing proper voltage and polarity. Ensure that wires are seated properly and not being pinched.
4. Once connections are completely made, carefully push all wires down into the housing and secure it tightly.
5. Using aiming sight to orient desired mounting angle.
6. Installation and service of luminaires should be performed by a qualified licensed electrician.