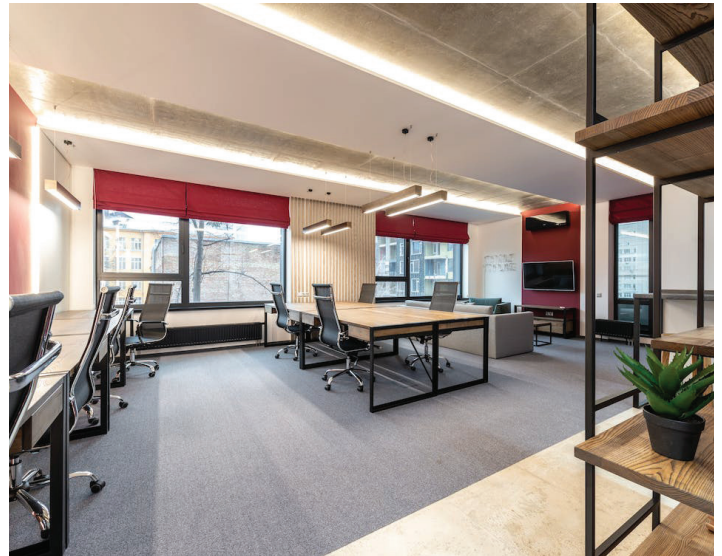


| | |
|---------------------|---------------|
| Project Name: | Fixture Type: |
| Complete Catalog #: | Date: |
| Comments: | |

HYBRID TYPE A+B TUBES



Hybrid Type A+B Tubes operate with either an existing ballast or can be direct wired to line voltage, 100-277VAC. They are 2', 3', and 4' double end input, UL listed, with CCT- and power-selectable models available. In type A mode, they are compatible with more than 90% of the fluorescent ballasts in the North American market. They are suitable for damp locations, dimmable, and DLC listed.

FEATURES

- Type A + B hybrid, for ballast or line voltage operation
- cULus listed
- DLC 5.1 listed
- NSF certified
- AC 100-277V
- Dimmable
- Damp location listed
- Double-end input only, with or without dimming

APPLICATIONS

- Offices
- Warehouses
- Task Lighting
- Vapor Tight Fixtures



ORDERING INFORMATION

| MODEL NO. | Type | Power | Lumen (lm) | Voltage | CRI | CCT | Beam Angle (deg) | Min. Order Quantity | US Stock | Length (feet) | |
|--------------------------------|---|---|---------------------|---------------|------------|------------|---------------------------|---------------------|------------------|---------------|----|
| ECO-ZY-T8-15W1200 BIXX | Fixed Wattage Fixed Color Temperature | 15W | 2100 | 100-277VAC | 80+ | 5000K | ≥140° | 30 pcs, 1 carton | Y | 4' | |
| ECO-ZY-T8-18W1200 BIXX | | 18W | 2520 | 100-277VAC | 80+ | 5000K | ≥140° | 30 pcs, 1 carton | Y | 4' | |
| ECO-ZY-T8-18W600 BIXX | Fixed Wattage & CCT | 18W | 2520 | 100-277VAC | 80+ | 3000-5000K | ≥140° | 30 pcs, 1 carton | Y | 2' | |
| ECO-ZY-T8-15W600 BIXX | | 15W | 2100 | 100-277VAC | 80+ | 3000-5000K | ≥140° | 30 pcs, 1 carton | Y | 2' | |
| ECO-ZY-T8-10W900 BIXX | | 10W | 1400 | 100-277VAC | 80+ | 3000-5000K | ≥140° | 30 pcs, 1 carton | Y | 3' | |
| ECO-ZY-T8-15W900 BIXX | | 15W | 2100 | 100-277VAC | 80+ | 3000-5000K | ≥140° | 30 pcs, 1 carton | Y | 3' | |
| ECO-ZY-T8-12W1200 BIXX | | 12W | 1680 | 100-277VAC | 80+ | 3000-5000K | ≥140° | 30 pcs, 1 carton | Y | 4' | |
| ECO-ZY-T8-15W1200 BIXX | | 15W | 2100 | 100-277VAC | 80+ | 3000-5000K | ≥140° | 30 pcs, 1 carton | Y | 4' | |
| ECO-ZY-T8-18W1200 BIXX | | 18W | 2520 | 100-277VAC | 80+ | 3000-5000K | ≥140° | 30 pcs, 1 carton | Y | 4' | |
| ECO-ZY-T8-20W1200 BIXX | | 20W | 2700 | 100-277VAC | 80+ | 3000-5000K | ≥140° | 30 pcs, 1 carton | Y | 4' | |
| ECO-ZY-T8-15W/12W/10W1200 BIXX | | Adjustable Wattage Ad- justable CCT | 15W/ 12W/ 10W | 2100- 1400 | 100-277VAC | 80+ | 3500K/ 4000K/ 5000K | ≥140° | 30 pcs, 1 carton | Y | 4' |
| ECO-ZY-T8-20W/18W/15W1200 BIXX | | | 20W/ 18W/ 15W | 2700- 2100 | 100-277VAC | 80+ | 3500K/ 4000K/ 5000K | ≥140° | 30 pcs, 1 carton | Y | 4' |

TECHNICAL SPECIFICATIONS

| | |
|--------------------------|--|
| Optical Distributions | ≥140° |
| CRI | 80+ |
| Efficacy with Ballast | 130 lm/W ±5% |
| Efficacy without Ballast | 135 lm/W ±5% |
| Input Voltage | 100-277 VAC |
| Power Frequency | 50-60 Hz |
| Certifications | cULus Damp Listed DLC 5.1 NSF Certified RoHS Compliant FCC |
| Housing Material | Aluminum |
| Rated Life (L70) | > 50,000 hours |
| Warranty | 10 Years or 50,000 hours non-prorated |
| Operating Temperature | -22°F to 104°F |
| Gross Weight | 30pcs Carton: 11.5 lbs [2'], 17.4 lbs [3'], 22.5 lbs [4'] |
| Controls | Dimmable, some models CCT-selectable & power-selectable |

*Data is based upon tests performed in a controlled environment and representative performance. Actual performance can vary depending on operating conditions. Specifications are subject to change without notice. All specifications are nominal unless otherwise noted.

*IES files provided on request.

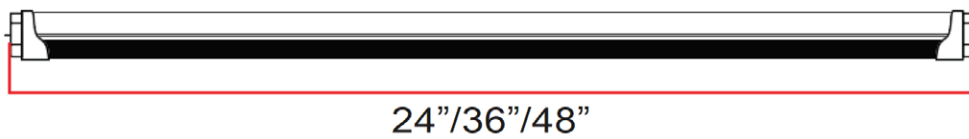
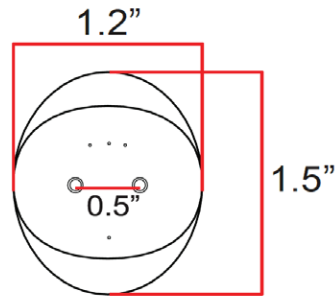
HYBRID TYPE A+B TUBES

CONTROLS

Control Options: Dimmable, some models CCT- and power-selectable.

DIMENSIONS

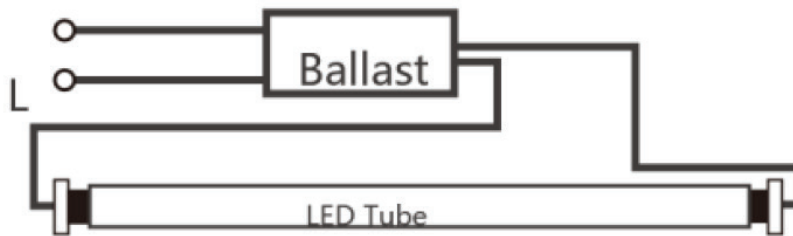
Unit: mm[inch]



WIRING DIAGRAMS

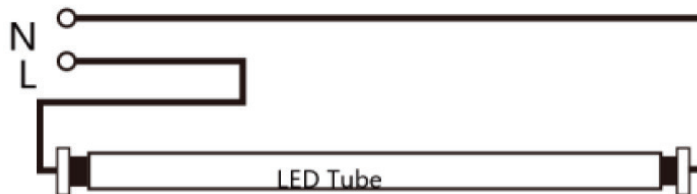
Type A Mode, Plug and Play:

AC100-277V



Type B Mode, Retrofit:

AC100-277V



AC100-277V

