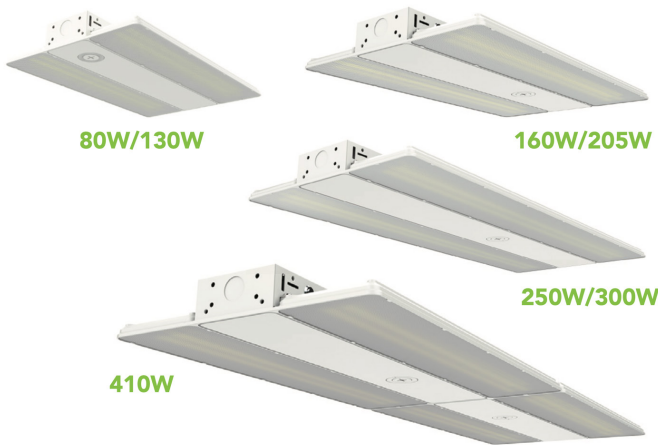


Project Name:	Fixture Type:
Complete Catalog #:	Date:
Comments:	

ORION CONSTELLATION SELECTABLE LINEAR HIGH BAY



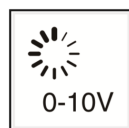
The Orion Constellation Selectable Linear High Bay provides versatility and performance. Each model is both wattage & CCT selectable, reducing distributor and contractor inventory stocking. The Orion Constellation I deliver excellent light uniformity and long life, and are ideal for both retrofit and new construction. The units are constructed of a rugged, one-piece die-cast aluminum housing, with a prismatic translucent lens, minimizing glare and maximizing uniformity. They offer light output up to 60,600 lumens for industrial, warehouse, retail, and other applications.

FEATURES

- cULus Certified
- Wattage & CCT Selectable
- Rugged, one-piece, die-cast aluminum housing
- Prismatic translucent lens
- Up to 60,600 lumens
- Damp location listed
- 120-277VAC or 347-480VAC
- 0-10V dimmable down to 10%

APPLICATIONS

- Industrial
- Warehouse
- Office
- Schools
- Retail



ORION CONSTELLATION SELECTABLE LINEAR HIGH BAY

ORDERING INFORMATION

MODEL #	SELECTABLE POWER	INPUT VOLTAGE	SELECTABLE CCT	LUMENS	MINIMUM ORDER QTY	US STOCK
ECO-SEM-MLH07-MW(80-32W)MCCT(40/50K)	80W 48W 64W 32W	120-277VAC or 347-480VAC	4000K 5000K	12,100 7,700 10,000 5,200	2	Yes
ECO-SEM-MLH07-MW(130-52W)MCCT(40/50K)	130W 78W 104W 52W	120-277VAC or 347-480VAC	4000K 5000K	18,500 12,100 15,200 8,200	2	Yes
ECO-SEM-MLH07-MW(160-64W)MCCT(40/50K)	160W 96W 128W 64W	120-277VAC or 347-480VAC	4000K 5000K	24,100 15,500 20,000 10,600	2	Yes
ECO-SEM-MLH07-MW(205-82W)MCCT(40/50K)	205W 123W 164W 82W	120-277VAC or 347-480VAC	4000K 5000K	30,500 19,500 25,000 14,000	2	Yes
ECO-SEM-MLH07-MW(250-100W)MCCT(40/50K)	250W 150W 200W 100W	120-277VAC or 347-480VAC	4000K 5000K	36,100 24,000 30,200 16,400	2	Yes
ECO-SEM-MLH07-MW(300-120W)MCCT(40/50K)	300W 180W 240W 120W	120-277VAC or 347-480VAC	4000K 5000K	42,000 28,000 36,000 20,000	2	Yes
ECO-SEM-MLH07-MW(410-164W)MCCT(40/50K)	410W 246W 328W 164W	120-277VAC or 347-480VAC	4000K 5000K	60,600 38,400 50,000 28,000	2	Yes

TECHNICAL SPECIFICATIONS

Input Voltage	120-277VAC or 347-480VAC
Input Power Frequency	50-60 Hz
Wattage Selectable	100%, 80%, 60%, and 40%
Efficacy	Up to 171 lm/W
Lumens	Up to 60,600 lumens
CCT Selectable	4000K, 5000K
CRI	80+
Control	0-10V dimming standard down to 10%, wattage & CCT selectable, emergency battery backup optional, Bluetooth PIR sensor optional, Bluetooth microwave sensor optional.
Operating Temperature	-40° to 122°F With battery backup: 41° to 122°F
Certifications	cULus damp location listed, FCC
Construction	Die-cast aluminum housing with prismatic translucent lens
Mounting Options	Steel wire rope mount, Surface mount, or Conduit pendant mount.
Warranty	10 years or 50,000 hour non-prorated

*Data is based upon tests performed in a controlled environment and representative performance. Actual performance can vary depending on operating conditions. Specifications are subject to change without notice. All specifications are nominal unless otherwise noted.

*IES files provided on request.

CONTROLS

Control Options: 0-10V dimming standard down to 10%, wattage & CCT selectable, emergency battery backup optional, Bluetooth PIR sensor optional, Bluetooth microwave sensor optional.

CCT AND WATTAGE SELECTABLE
This fixture has the function of adjusting the lumens output and color temperature on-site.

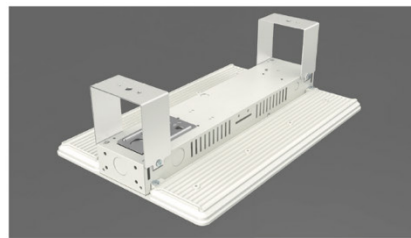
CCT SELECT
4000K 5000K
Offer two CCT adjustable (4000K, 5000K).

WATTAGE SELECT
40% 60% 80% 100%
Each model supports 4 positions wattage regulation: 100%, 80%, 60%, 40%

MOUNTING OPTIONS



Mounting With Steel Wire Rope



Surface Mounting



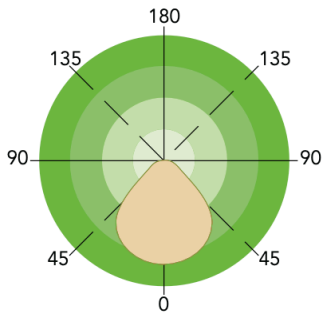
Conduit Pendant Mount

ACCESSORIES

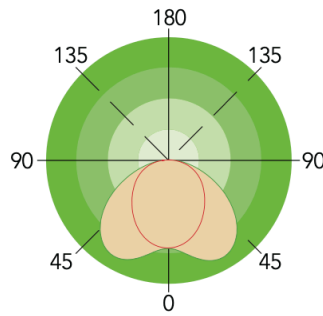
Emergency Battery 8W 900lm 90min, suit for 80W, 130W (Sold separately)	Emergency Battery 15W 2000lm 90min, suit for 160W, 205W (Sold separately)	Emergency Battery 25W 3500lm 90min, suit for 250W, 300W, 410W (Sold separately)	Emergency Battery 30W, 4000lm, 90min, suite for 347-480V input voltage (Sold separately)
Plug-and-Play PIR Sensor 12-24VDC PIR sensor: MSANT12VPH01 Bluetooth PIR sensor: MSANT12VPHB01 (Sold separately)	Plug-and-Play Microwave Sensor 12-24VDC Microwave sensor: MSANT12VMH01 Bluetooth microwave sensor: MSANT12VMHB01 (Sold separately)	Steel Wire Rope(Default) USE: Chain mounting.	Wire Guards (Sold separately)

ORION CONSTELLATION SELECTABLE LINEAR HIGH BAY

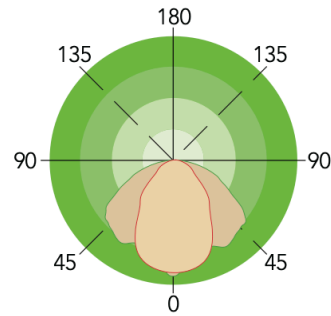
PHOTOMETRICS



General



Aisle



Narrow

DIMENSIONS unit: mm/inch

