

Project Name:	Fixture Type:
Complete Catalog #:	Date:
Comments:	

OCTANE PLUS RECESSED CANOPY

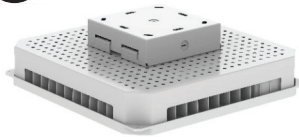


Model Options

P1



P2



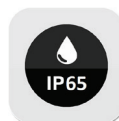
Octane Plus Recessed Canopy is a DLC-listed canopy fixture that delivers high lumen output with high efficiency. Ideal for gas stations but also for garages, industrial sites, and food processing facilities. LED rated life is 100,000+ hours and it's offered in many different color temperatures and beam angles. This canopy fixture is IP65 and comes with a microwave sensor option.

FEATURES

- cULus, DLC
- 190 lm/W
- IP65
- 100-277VAC
- Multiple beam angles
- Multiple color temperatures
- Easy to install and operate
- Instant start, no flicker, silent operation

APPLICATIONS

- Gas Station
- Garage
- Industrial sites
- Food processing facilities



OCTANE PLUS RECESSED CANOPY

ORDERING INFORMATION

MODEL NO.	POWER	LUMEN (LM)	VOLTAGE	CRI	CCT	BEAM ANGLE (DEG)	MIN. ORDER QTY	US STOCK	SIZE(MM)	CARTON SIZE(MM)
RK-GS80W-01-G7	80W	11,200	100-277Vac	80+	3000K/4000K/5000K/5700K	30 / 60 / 90 / 150	6	Y	12.6"x12.6"x7.3"	18.9"x18.1"x6.9"
RK-GS100W-01-G7	100W	10,000	100-277Vac	80+	3000K/4000K/5000K/5700K	30 / 60 / 90 / 150	6	Y	12.6"x12.6"x7.3"	18.9"x18.1"x6.9"
RK-GS120W-01-G7	120W	16,800	100-277Vac	80+	3000K/4000K/5000K/5700K	30 / 60 / 90 / 150	6	Y	12.6"x12.6"x7.3"	18.9"x18.1"x6.9"
RK-GS150W-01-G7	150W	21,000	100-277Vac	80+	3000K/4000K/5000K/5700K	30 / 60 / 90 / 150	6	Y	12.6"x12.6"x7.3"	18.9"x18.1"x6.9"

TECHNICAL SPECIFICATIONS

Optical Distributions	30° / 60°/ 90° /150°
CRI	70+
Efficacy	140 Lm/W
IP Rating	IP65
Input Voltage	100-277 VAC
Current	1.25A (150W @120V)
Power Frequency	50-60 Hz
Power Factor	>0.95
Certifications	cULus, DLC, FCC
Housing Material	Die-cast Aluminum
Rated Life (L70)	>50,000 Hours
Warranty	10 Years, 50,000 Hours Non-Prorated
Operating Temperature	-40-122°F
Luminaire Gross Weight	16.5-19.8 lbs

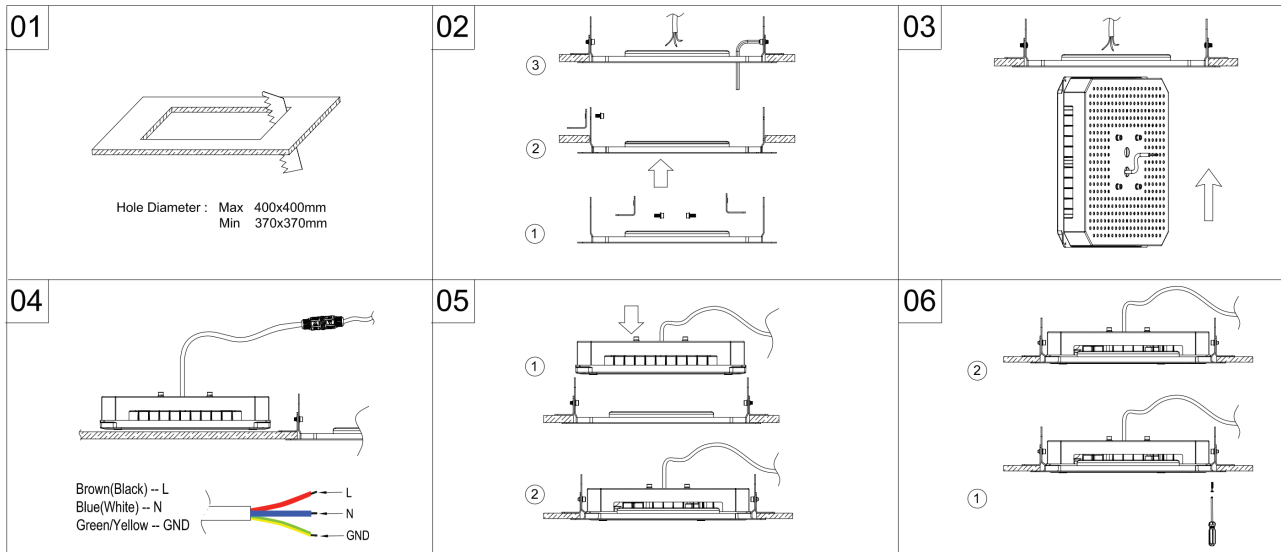
*Data is based upon tests performed in a controlled environment and representative performance. Actual performance can vary depending on operating conditions. Specifications are subject to change without notice. All specifications are nominal unless otherwise noted.

*IES files provided on request.

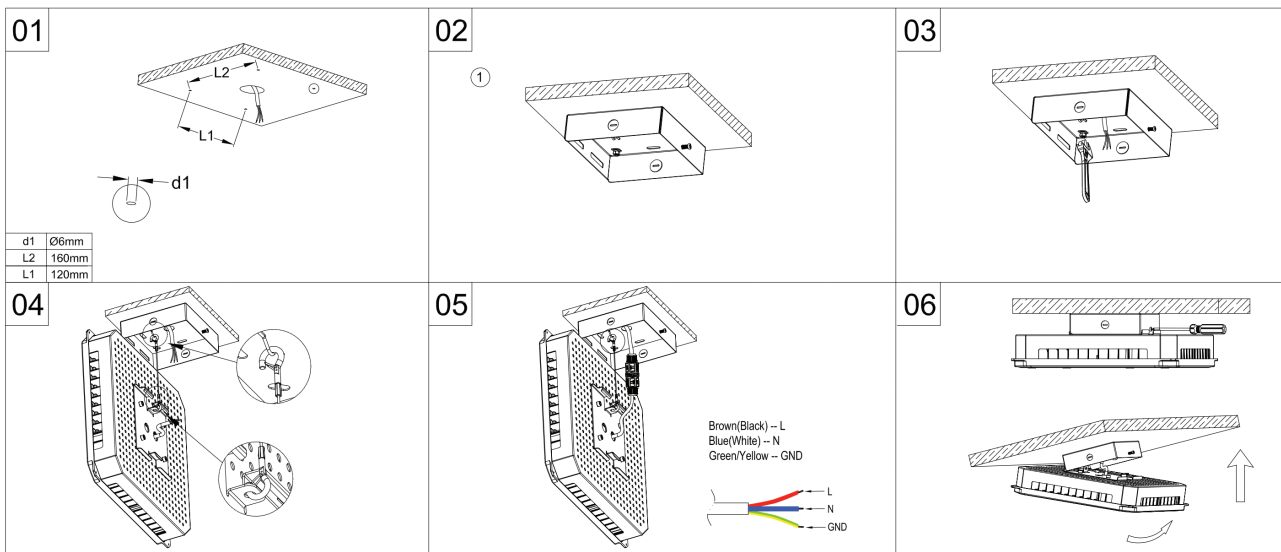
OCTANE PLUS RECESSED CANOPY

MOUNTING OPTIONS

P1 Recessed Installation Frame (standard)



P2 Surface mounting installation



CONTROLS

Control options: microwave motion sensor, and daylight sensor.

Microwave Motion Sensor Options (Extra Remote Control Options)

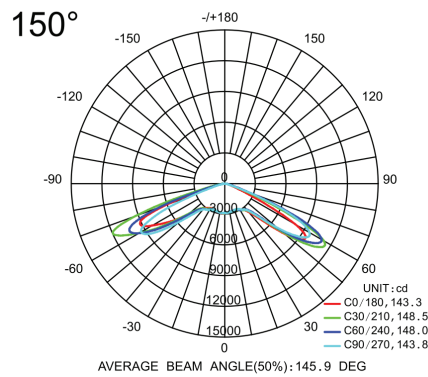
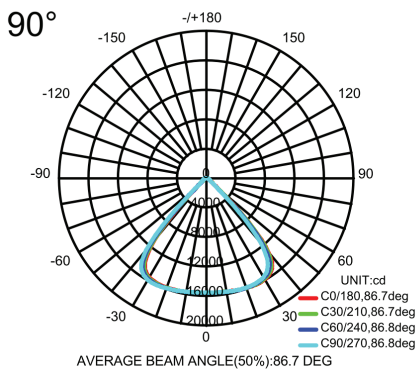
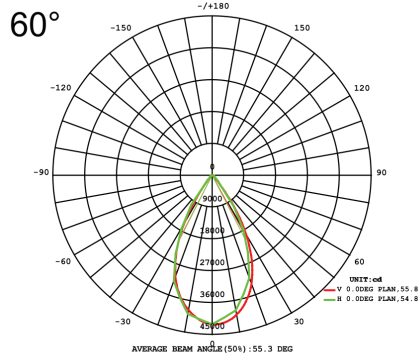
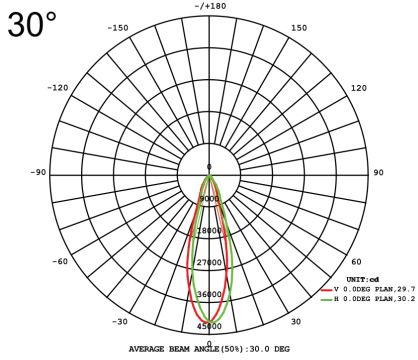


Default Setting:
Detection area:100%,
Hold time:5 seconds,
Daylight threshold:50lx,
Stand-by dimming level:50%,
Stand-by period:10 seconds

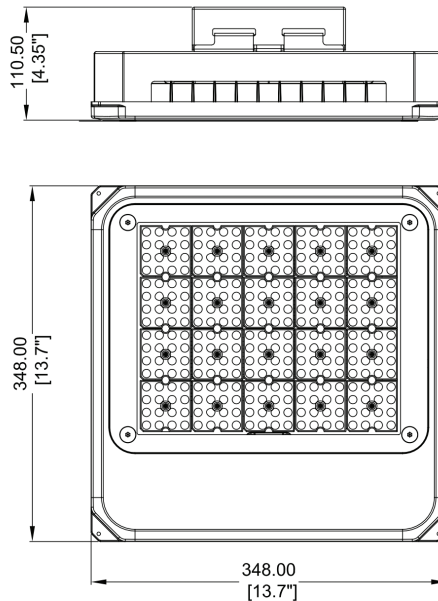
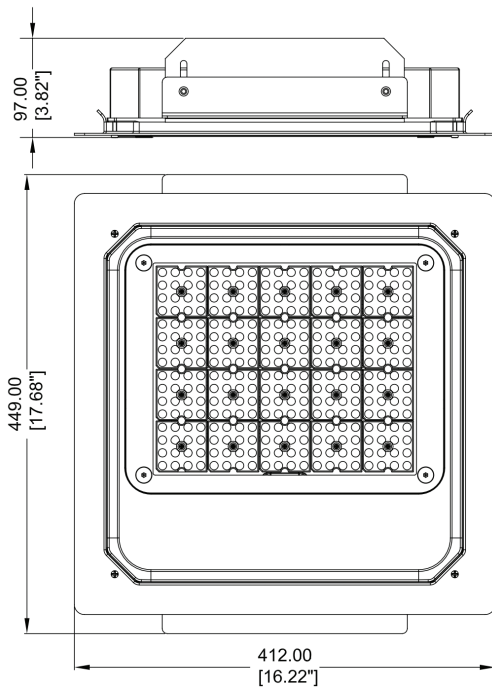


OCTANE PLUS RECESSED CANOPY

PHOTOMETRICS



DIMENSIONS



P1 Recessed Installation Frame (standard)

P2 Surface mounting installation