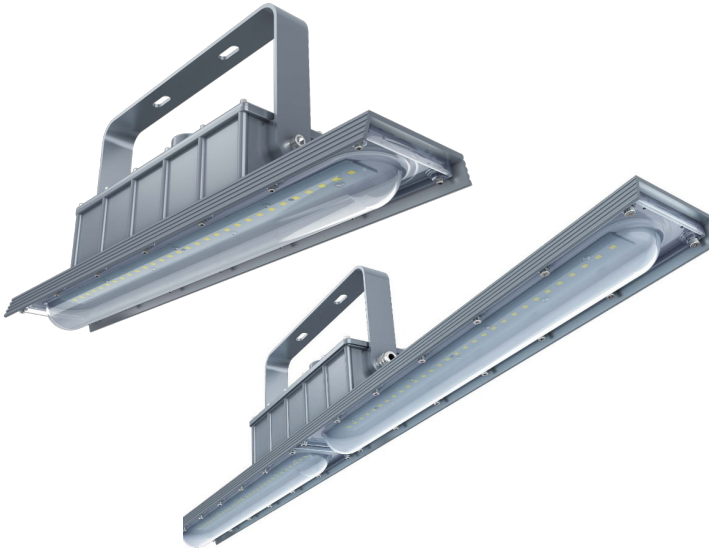


Project Name:	Fixture Type:
Complete Catalog #:	Date:
Comments:	

## FALCON I LINEAR LOW BAY FIXTURE



The **Falcon I Linear Low Bay Fixture** is an industrial-grade 2' and 4' linear high bay family, with a wide range of Class I, II, and III explosion proof ratings, as well as Marine markings of UL1598, UL1598A, and ABS. The housing boasts die-cast aluminum, glass lens or glass with polycarbonate lens, marine rated powder coated finish, and stainless steel hardware, with an IP66 rating.

### FEATURES

- UL844:
  - Class I, Division 2, Groups A, B, C, D
  - Class II, Division 1, Groups E, F, G
  - Class II, Division 2, Groups F, G
  - Class III
- Marine Markings: UL 1598, UL1598A, ABS
- IP 66
- 100-277VAC, IC 100-277VAC, 200-480VAC, 12-48VDC
- Dimming and battery back up options available

### APPLICATIONS

- Oil and Gas
- Mining
- Chemical
- Ocean, marine, and aerospace
- Metal treatment
- Food and alcohol
- Other high humidity, high dust, high temperature, and vapor locations



# FALCON I LINEAR LOW BAY FIXTURE

## ORDERING INFORMATION

MODEL NO.	POWER	LUMENS	VOLTAGE	CRI	CCT	BEAM ANGLE (DEG)	MIN. ORDER QUANTITY	US STOCK	SIZE
ECO-EX-20W-H2YZDA	20W	2,800	100-277 VAC IC 100-277 VAC 200-480 VAC 12-48 VDC	80+	3000K-5000K	120	2	N	23.6" x 4.7"
ECO-EX-40W-H2YZDA	40W	5,600		80+	3000K-5000K	120	2	N	23.6" x 4.7"
ECO-EX-40W-H4YZDA	40W	5,600		80+	3000K-5000K	120	2	N	47.2" x 4.7"
ECO-EX-60W-H4YZDA	60W	8,400		80+	3000K-5000K	120	2	Y	47.2" x 4.7"
ECO-EX-80W-H4YZDA	80W	11,200		80+	3000K-5000K	120	2	N	47.2" x 4.7"

## TECHNICAL SPECIFICATIONS

Wattage	20W (2'), 40W (2'), 40W (4'), 60W (4'), 80W (4')
Lumen output	Up to 11,200 lumens
Efficacy	140 Lm/W
Beam angle	120°
CRI	80+
CCT	3000K – 5000K
IP Rating	IP66
Input Voltage	100-277 VAC IC 100-277VAC 200-480VAC 12-48VDC
Current	20W: 167mA [@120V] 40W 2': 333mA [@120V] 40W 4': 333mA [@120V] 60W: 500mA [@120V] 80W: 667mA [@120V]
Power Frequency	50-60 Hz
Certifications	UL844 Class I, Division 2, Groups A, B, C, D Class II, Division 1, Groups E, F, G Class II, Division 2, Groups F, G Class III Marine Markings: UL1598, UL1598A, ABS IP 66
Housing Material	Die-casting Aluminum
Rated Life (L70)	50,000 hours
Warranty	10 Years
Operating Temperature	-40°F to 140°F
Net Weight	2': 8.82 lbs / 4': 12.13 lbs
Controls	Dimming and battery backup options available

\*Data is based upon tests performed in a controlled environment and representative performance. Actual performance can vary depending on operating conditions. Specifications are subject to change without notice. All specifications are nominal unless otherwise noted.

\*IES files provided on request.

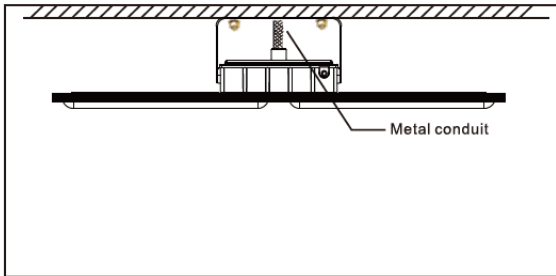
# FALCON I LINEAR LOW BAY FIXTURE

## CONTROLS

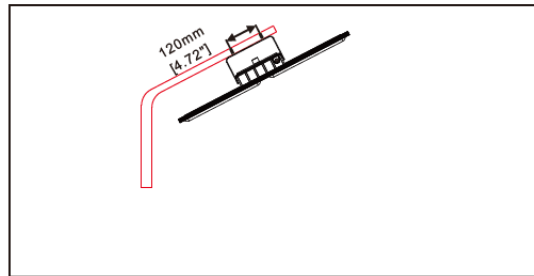
Control Options: Dimming and emergency battery backup for up to three hours.

## MOUNTING OPTIONS

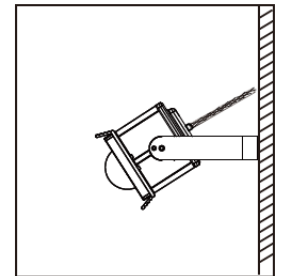
**No. 1 Ceiling Mounting**



**No. 2 Pole Bracket Mounting**



**No. 3 Wall Mounting**



## PHOTOMETRICS

120D

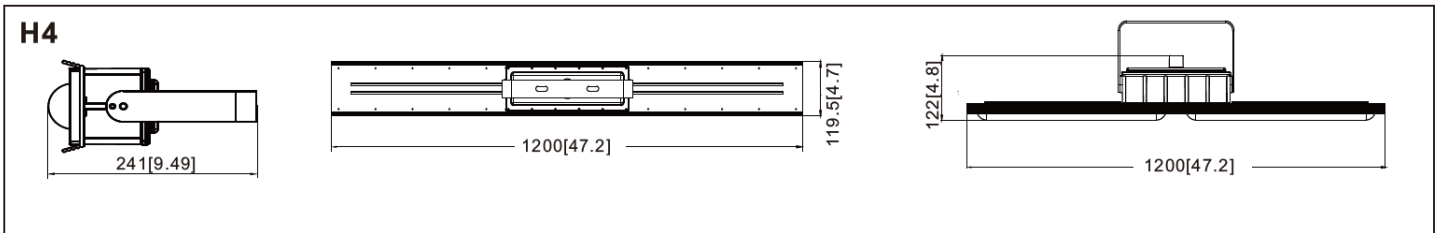
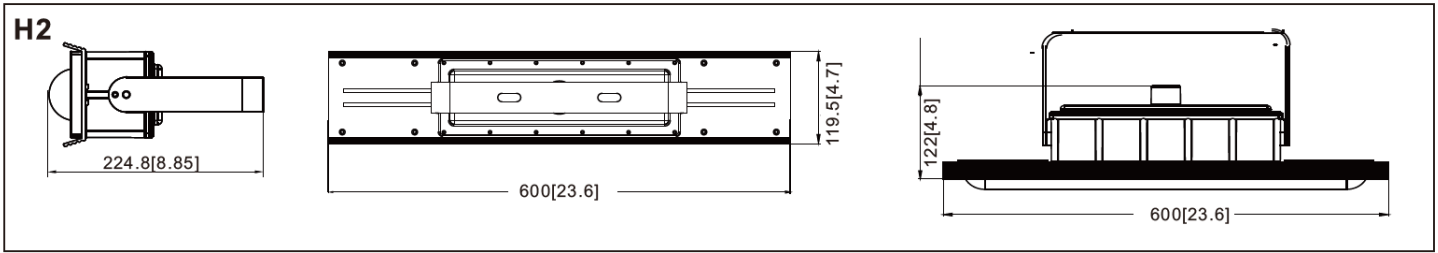
	Center Beam fc	Beam Width	
10ft	25fc	30ft	34ft
20ft	6fc	59ft	67ft
30ft	3fc	89ft	100ft
40ft	1fc	148ft	134ft
50ft	0.6fc	178ft	168ft

■ Vert, Spread; 120°  
■ Horiz, Spread; 120°

# FALCON I LINEAR LOW BAY FIXTURE

## DIMENSIONS

Unit: mm[inch]



## MOUNTING ACCESSORIES



**Bracket**



**Metal Conduit**



**Bended Pipe**