

Project Name:	Fixture Type:
Complete Catalog #:	Date:
Comments:	

## SIRIUS AREA LIGHT FIXTURE



**The Sirius Area Light** is the latest generation of intelligent, outdoor, area luminaires, which combines sleek, low-profile design with industry-leading performance. Designed & engineered for the discriminating specifier, the Sirius design and photometric performance will elevate your next project. Precision-engineered, optical-grade Mitsubishi polycarbonate lenses provide maximum light transmissivity, while improving visual comfort. Simple field rotatable optics are standard. Top quality Meanwell & Sosen Drivers are paired with Lumileds emitters to provide up to 170 lm/W efficacy, along with a 10 year, non-prorated warranty.

### FEATURES

- LED Type - Lumileds
- System Efficiency - up to 170 lm/W
- Up to 71400 lumens
- Power Supply / Chip Set - Meanwell / Inventronics
- Input Voltage - 100-277VAC or 347/480VAC Options
- Rebate Eligible - Yes, DLC Listed, Contact for details
- Warranty - 10 Years or 50,000 Hours Non-Prorated

### APPLICATIONS

- Parking Areas
- Retail
- Office
- Medical



# SIRIUS AREA LIGHT FIXTURE

## ORDERING INFORMATION

PART NUMBER	WATTAGE	LUMENS	VOLTAGE	DIMENSIONS	CCT	MIN ORDER QTY	US STOCK
ECO-KOA-75W-OT	75W	12750	120-277 or 347-480VAC	23" x 11" x 2.2"	3000K, 4000K, 5000K, 6500K	2	Yes
ECO-KOA-115W-OT	115W	19550	120-277 or 347-480VAC	23" x 11" x 2.2"	3000K, 4000K, 5000K, 6500K	2	Yes
ECO-KOA-145W-OT	145W	24650	120-277 or 347-480VAC	23" x 11" x 2.2"	3000K, 4000K, 5000K, 6500K	2	Yes
ECO-KOA-180W-OT	180W	30600	120-277 or 347-480VAC	26.7" x 14" x 2.2"	3000K, 4000K, 5000K, 6500K	2	Yes
ECO-KOA-200W-OT	200W	34000	120-277 or 347-480VAC	26.7" x 14" x 2.2"	3000K, 4000K, 5000K, 6500K	2	Yes
ECO-KOA-230W-OT	230W	39100	120-277 or 347-480VAC	26.7" x 14" x 2.2"	3000K, 4000K, 5000K, 6500K	2	Yes
ECO-KOA-300W-OT	300W	51000	120-277 or 347-480VAC	30" x 14" x 3"	3000K, 4000K, 5000K, 6500K	2	Yes
ECO-KOA-420W-OT	420W	71400	120-277 or 347-480VAC	30" x 14" x 3"	3000K, 4000K, 5000K, 6500K	2	Yes

## TECHNICAL SPECIFICATIONS

LED Type	Lumileds
Beam Angle	Type III, Type IV, Type V
CRI	>80
Efficacy	up to 170 lm/W
IP Rating	IP66
Power Supply / Chip Set	Meanwell / Inventronics
Power Frequency	50-60Hz
Power Efficiency	>93%
Power Factor	>0.98
Certificates	UL, CUL, DLC, CE, RoHS, FCC, SAA
Fixture Material	Aluminum Alloy
Rated Life (L70)	100,000 Hours
Warranty	10 Years or 50,000 Hours Non-Prorated
Operating Temperature	-40 – 122 F
Luminaire Gross Weight	8.2 lbs - 21.2 lbs, depending on wattage
Optional Mounting	Slip fitter / Arm mount / Yoke mount / Slide & lock / Square pole / Round pole / Trunion
EPA	1.01 ft <sup>2</sup>
Housing Color	Black, Brown, White, Silver

\*Data is based upon tests performed in a controlled environment and representative performance. Actual performance can vary depending on operating conditions. Specifications are subject to change without notice. All specifications are nominal unless otherwise noted.

\*IES files provided on request.

# SIRIUS AREA LIGHT FIXTURE

## MOUNTING ACCESSORIES - ORDER SEPARATELY

Type A Slipfitter	Type B Adjustable Arm Mount	Type C Yoke Mount	Type D Slide & Lock Mount	Type E Square Pole Mount	Type F Round Pole Mount	Type G Trunnion Mount
TypeA: 1.1kg	TypeB: 2.0kg	TypeC: 75W-145W 0.9kg 180-230W 1.0kg 300-420W 1.5kg	TypeD: 1.1kg	TypeE: 1.1kg	TypeF: 1.4kg	TypeG: 1.4kg

## CONTROLS

Control Options: DALI, 1-10V / PWM / timer dimming, NEMA, Zhaga, Presence detection sensor. Dim-to-Off with standby power < 0.5W. DIP switch.

## ACCESSORIES

### Photocell



### Shorting Cap



### 3 pin/7 Pin Receptacles



### PIR Sensor



### DIP Switch

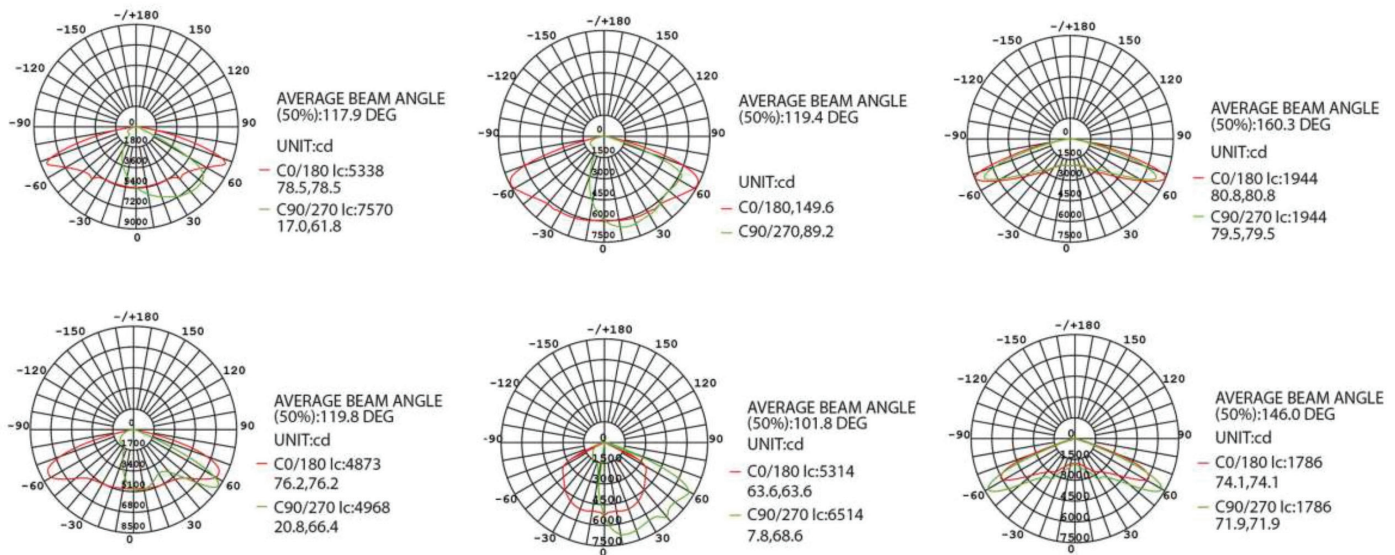


### Visor (Light Shield)



\* As the products are upgraded, the accessories may differ from those described in the pictures. Please consult with our sales team for updated details and order separately.

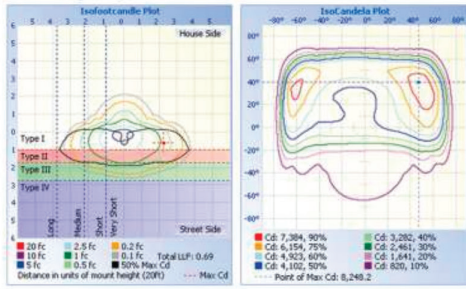
## PHOTOMETRICS



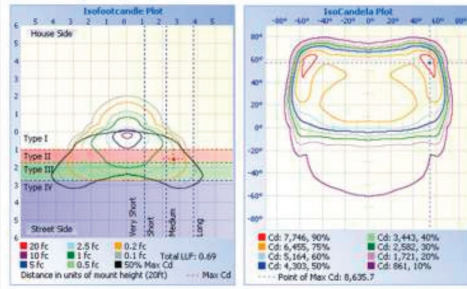
\* All published Luminaire photometric testing performed to IESNA LM-79-08 standards by a NVLAP accredited Laboratory.

## PHOTOMETRICS

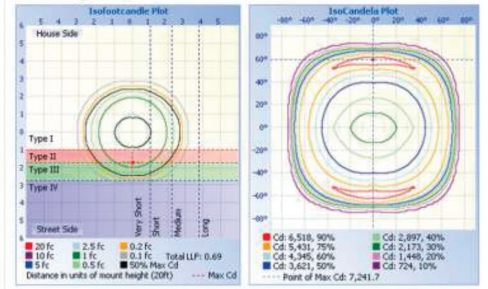
**TYPE III (T301)**



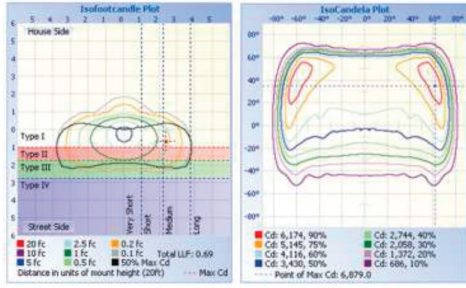
**TYPE IV (T401)**



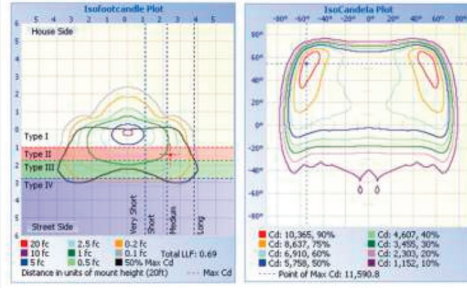
**TYPE V (T501)**



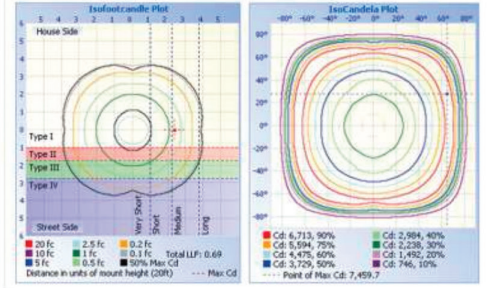
**TYPE III (T302)**



**TYPE IV (T402)**



**TYPE V (T502)**



**TYPE V (T512)**

